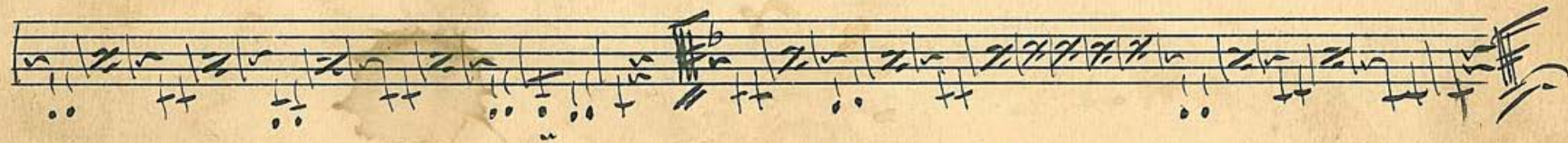
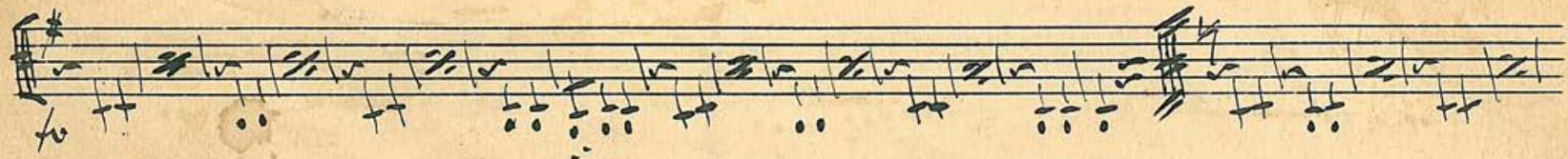
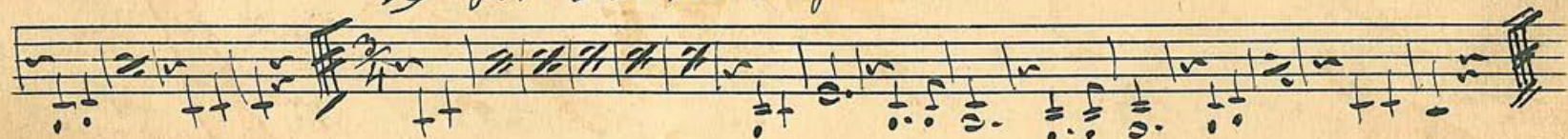
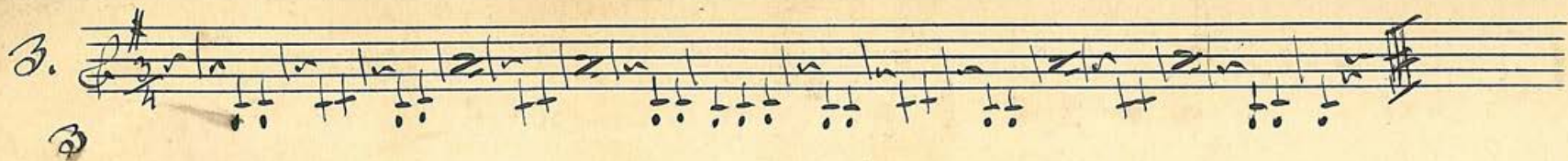




*2. Rosenblümen Mägen*



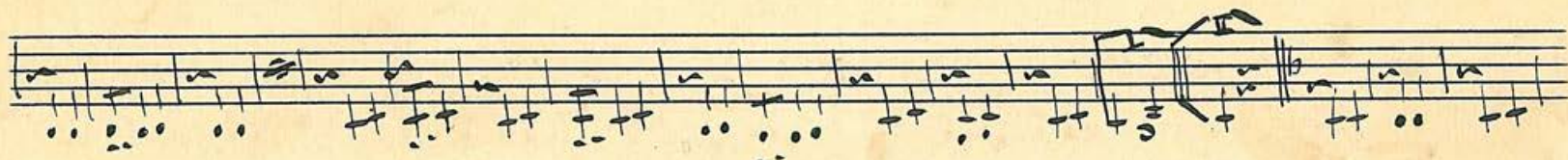
II in Es

3. 

3



4. *Mahar*



On Mulder's Green

1 2 3 4 5 6 7

5.  $\frac{3}{4}$

$\frac{3}{4}$

1 2 3 4 5 6 7

Th. J. G.

*D in E♭*

Handwritten musical notation on a five-line staff. It begins with a treble clef and a key signature of one flat (E♭). The notation consists of rhythmic patterns, primarily eighth and sixteenth notes, with some rests. There are several double bar lines and repeat signs throughout the staff.

Handwritten musical notation on a five-line staff, continuing the piece. It features a mix of rhythmic patterns and melodic lines, with some notes beamed together. The notation includes double bar lines and repeat signs.

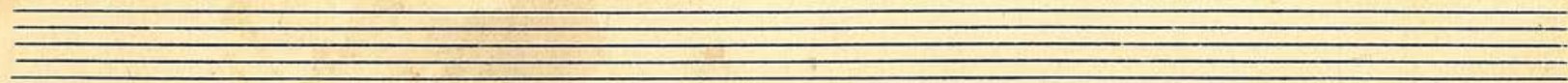
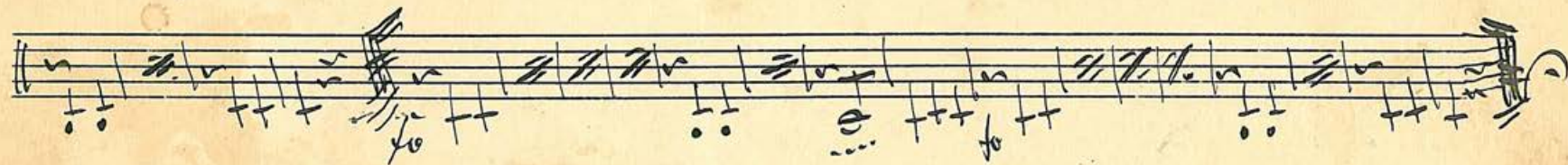
Handwritten musical notation on a five-line staff, ending with a signature. The notation includes rhythmic patterns and melodic lines, with a double bar line and repeat sign at the end. The signature is written in cursive and reads "A. J. Rogers".

Handwritten musical notation on a five-line staff, starting with a treble clef and a key signature of one flat. The notation includes rhythmic patterns and melodic lines, with a double bar line and repeat sign at the end.

Handwritten musical notation on a five-line staff, featuring rhythmic patterns and chordal structures. The notation includes double bar lines and repeat signs.

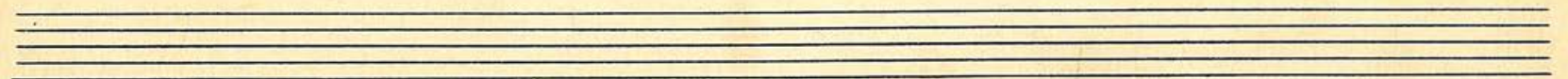
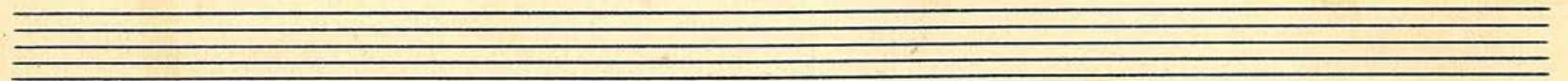
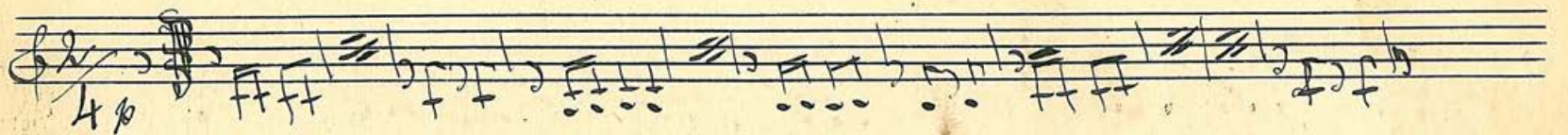
Handwritten musical notation on a five-line staff, concluding the piece with a double bar line. The notation includes rhythmic patterns and melodic lines.

II in G♯.

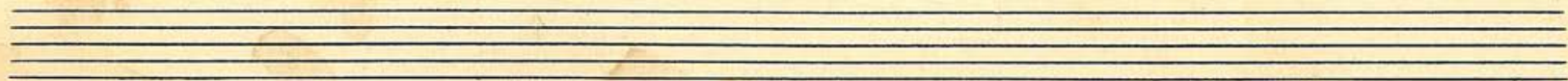
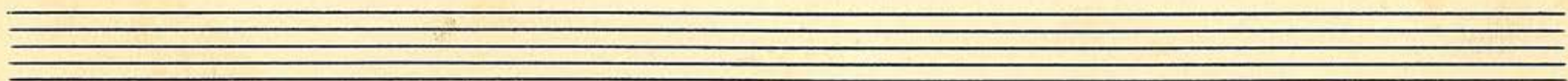
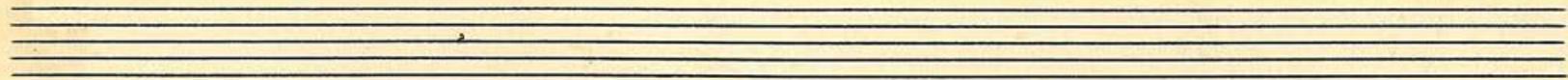
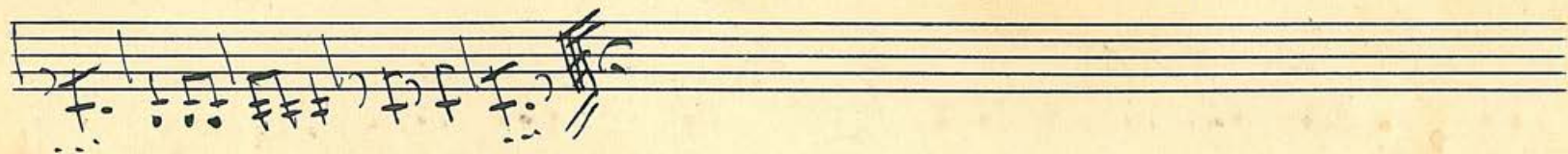


No. 9. II in Es Polka

Opolitz

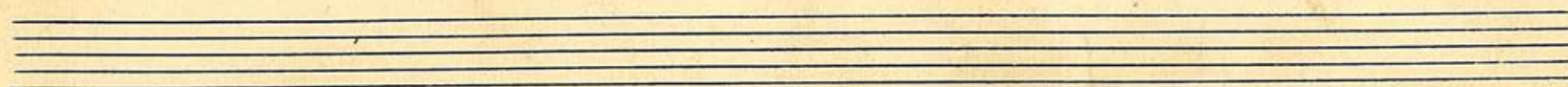
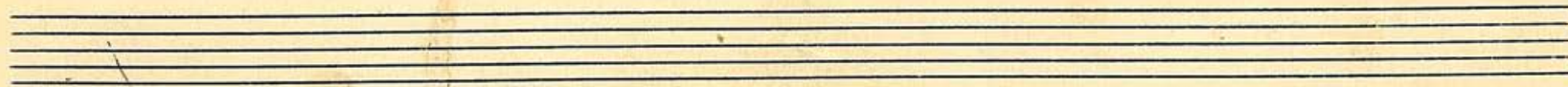
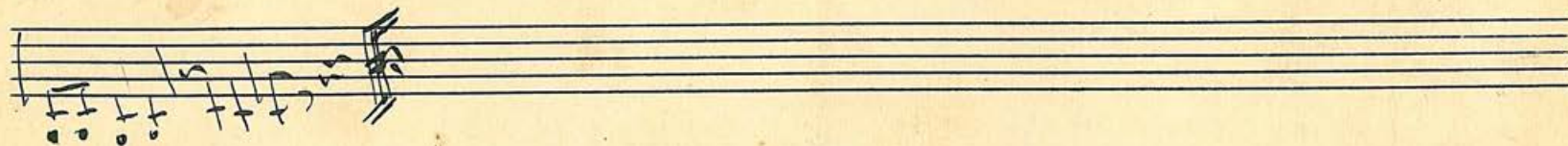
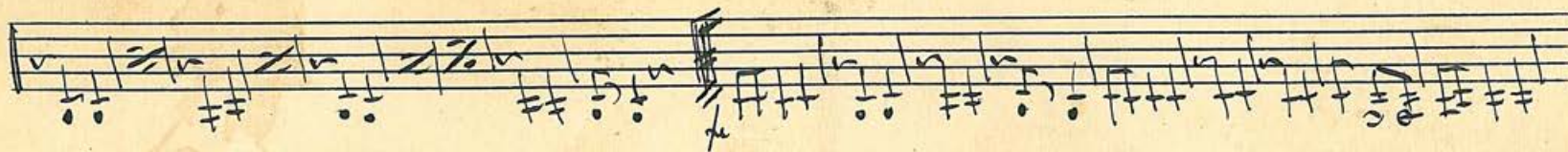
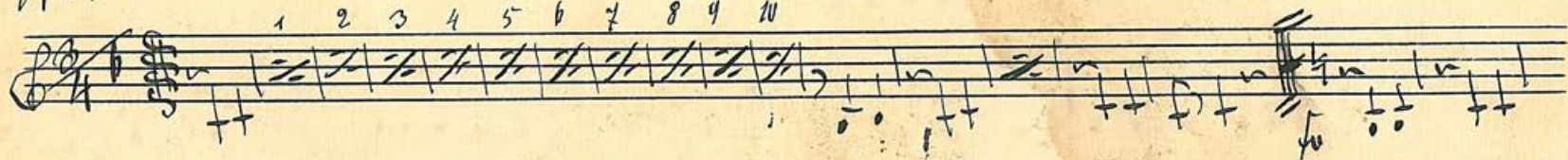


10 # in G. Primländer



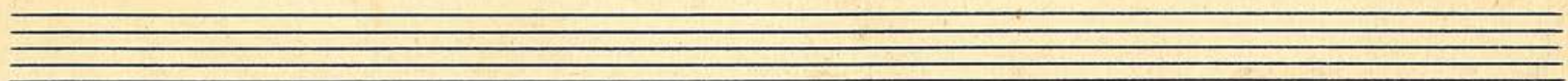
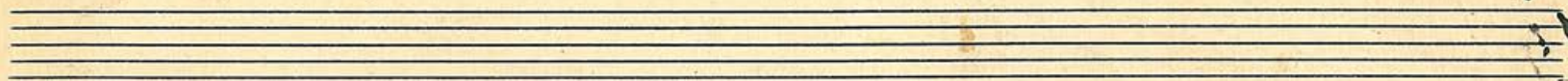
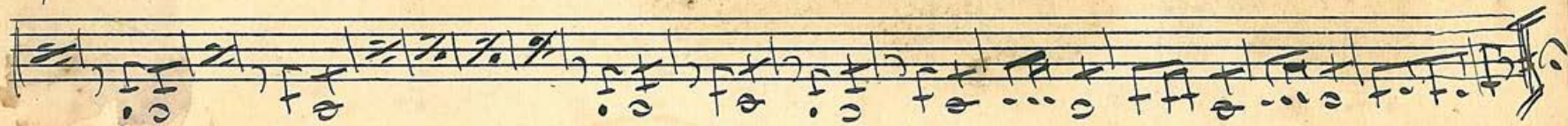
№ 11 Lina Muzniba II in G

1 2 3 4 5 6 7 8 9 10





II 8 Solinäs



13. *in G.* *Spindvallen*  $\frac{2}{4}$  *fin*

*fin*

*2.*

*fin* *3.*

*fin*

~~Handwritten musical notation, heavily crossed out with diagonal lines.~~

~~Handwritten musical notation, heavily crossed out with diagonal lines.~~

