

Die Urheberrechte liegen entweder beim Eigentümer der Originale oder der Erstkopien.

Vor Veröffentlichung oder öffentlicher Aufführung ist Rücksprache mit der Archivverwaltung des Heimatkundlichen Arbeitskreises erforderlich.

I. Orientierungsdaten

Schreiber Ludwig Kellermann u.a.
 Fundort 8391 Heinrichsbrunn
 Zeit der Niederschrift ?

Ort der Aufzeichnung teilw. Geb. Mauth,
 teilw. CSSR

II. Äußerliche Merkmale

Umschlagaufschrift/Kennzeichnung der ersten Seite

gedruckt: "Star Schulheft", geschrieben: "Libüse Polka Kellermann";
 hell-grünl.-blauer, verbläster, dünner Pappkartonals Umschlag; mehr-
 fach geknickt, kleineres Format als inliegende Blätter (20 x 15)

Maße 20,5 cm x 14,5 cm; 23 cm x 30 cm; 24,5 cm x 31 cm (s. jew. Kopie)

Umfang 18 Seiten

Weitere Beschreibung *

Einzelblätter

S.1 - 8 starkes, hellbraunes, fleckiges Papier mit geknickten und ausge-
 fransten Ecken und Rändern; Blätter längs und Quer gefaltet, eingerissen,
 S.7/8 durchgerissen; schwarze, selbstgezogene Notenzeilen; Notierung
 schwarze, verbläste Tinte; Vermerke S.3 blauer Stift, S.8 Bleistift;
 S.9 - 18 knapp mittelstarkes, beiges Papier in 2 verschiedenen Formaten;
 große Blätter längs und quer gefaltet, kleine Blätter nur längs; gedruck-

III. Inhaltsübersicht

Ländler	Walzer x (nur Klar, Tromba I Es)
Mazurka	Deutscher Dreher
Galopp	Schottisch
Polka x	Zwiefache
Figurentänze	andere Tänze
Marsch	Vortragsstück Liebestraum
Lied	

Notiert für Klarinette Es und B, Tromba I in Es, Baß (nicht Walzer), Flü-
 gelhorn I und II in B (o. Walzer), Baßflügelhorn I in B (ohne Walzer)
 Quellenvermerke S.3: "Schubert Franz"

IV. Weitere Angaben

Besitzer Ludwig Kellermann, Heinrichsbrunn, 8391 Mauth

Vermerke S.2: schwer lesbar, evtl. "Ludwig Kellerm."; S.8: "Frz. Ana-
 michl ...?"; S.13: "Kellermann Ludwig"

Letzter Gebrauch ?

Datum und Umstände des Erhalts

Am 10.11.1985 von Herrn Kellermann zur Durchsicht und zur Kopie er-
 halten.

Blatt 1-9 Noten

" 10 Gedächtnisblatt

Fortsetzung Beschreibung:

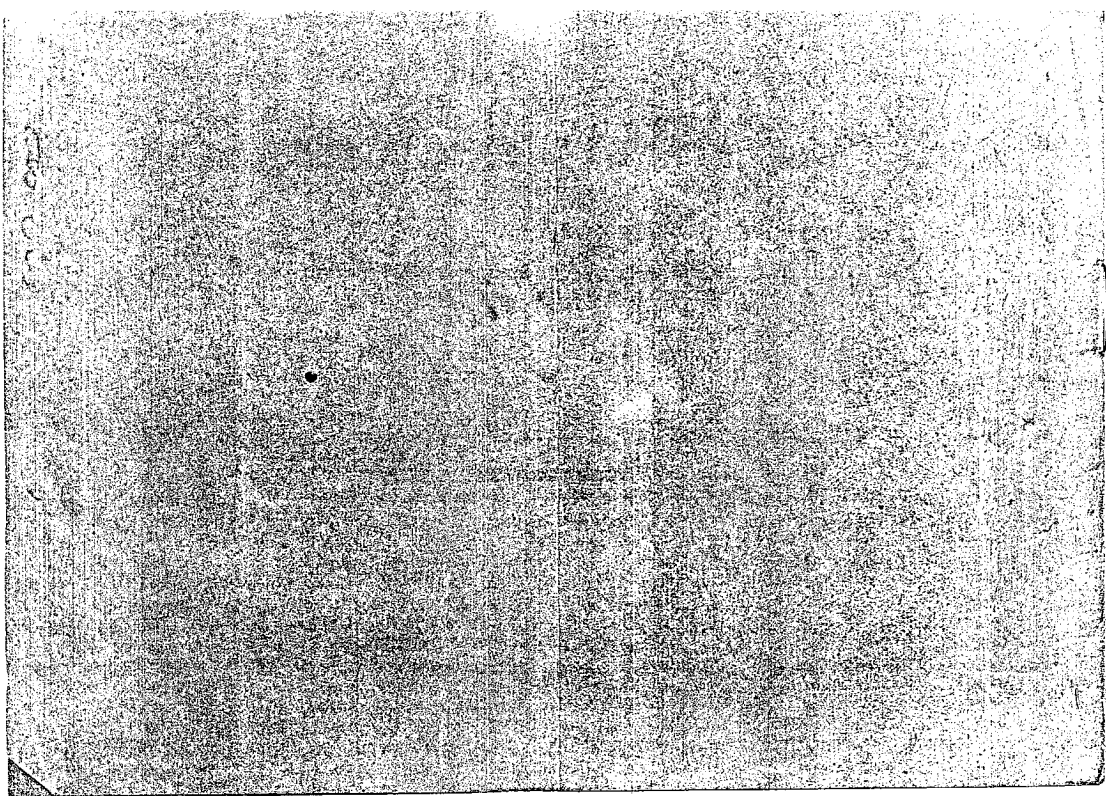
te, schwarze Notenzeilen; Notierung mit blauem Kugelschreiber; im Original jeweils Blätter mit unbeschriebener Rückseite (hier zusammenkopiert).

10

Star
Schulheft

Libris Polke
H. Hermann

M (FRG)
16



OFFICE
31

1

Libellula

Sen

Lecky

Hobok

Clarinet

1.

2.

3.

M (FRG)

16

Ten. Solo kolo Talerk

Classical 60

Handwritten musical score for 'Ten. Solo kolo Talerk'. The score consists of seven staves of music. The first staff begins with a treble clef, a key signature of one sharp (F#), and a 2/4 time signature. The music is written in a single melodic line with various note values, rests, and dynamic markings. There are several measures with triplets and some measures with a '3.' marking. The piece concludes with a double bar line and a fermata.

Libuse Polka

Class. 60

Handwritten musical score for 'Libuse Polka'. The score consists of five staves of music. The first staff begins with a treble clef, a key signature of one sharp (F#), and a 2/4 time signature. The music is written in a single melodic line with various note values, rests, and dynamic markings. There are several measures with triplets and some measures with a '3.' marking. The piece concludes with a double bar line and a fermata.

10/11/14

0116

Küstmann. Der Larky Talente Matzen Clarinetto B.

1.

2.

3.

Küstmann Matzen
Clarinetto B.

Sen. ... de ... Waler ...

Clarinete

Handwritten musical score for Clarinet, consisting of seven staves of music. The notation includes various note values, rests, and dynamic markings. The paper shows signs of age and wear.

Libase Polka

Camille B.

Handwritten musical score for Libase Polka, consisting of five staves of music. The notation includes various note values, rests, and dynamic markings. The paper shows signs of age and wear.

OP. 12
11

Len Larkby Horn

Trombone

1.

Handwritten musical notation for the first system, consisting of five staves. The notation includes various notes, rests, and dynamic markings such as *mf* and *f*. The music is written in a staff with a treble clef and a 2/4 time signature.

2.

Handwritten musical notation for the second system, consisting of three staves. The notation includes various notes, rests, and dynamic markings such as *mf* and *f*. The music is written in a staff with a treble clef and a 2/4 time signature.

3.

Handwritten musical notation for the third system, consisting of four staves. The notation includes various notes, rests, and dynamic markings such as *mf* and *f*. The music is written in a staff with a treble clef and a 2/4 time signature.

Four empty musical staves at the bottom of the page, indicating the end of the written music on this page.

Ten verelo do Kola Koučik

Samba I E.

Handwritten musical score for 'Ten verelo do Kola Koučik'. The score is written on ten staves. The first staff begins with a treble clef, a key signature of one flat (B-flat), and a 3/4 time signature. The music consists of a series of rhythmic patterns, primarily eighth and sixteenth notes, with some rests. There are several double bar lines throughout the piece. The notation is somewhat dense and appears to be a rhythmic exercise or a specific style of samba.

Libu Polka

Chamber

Handwritten musical score for 'Libu Polka'. The score is written on six staves. It begins with a treble clef, a key signature of two sharps (D major), and a 2/4 time signature. The music features a mix of eighth and sixteenth notes, with some triplet markings. The notation is clear and well-organized, typical of a chamber piece. There are several double bar lines and some dynamic markings.

016

Handwritten notes at the bottom of the page, possibly a signature or additional instructions.

I.

II.

III.

IV.

Handwritten musical notation on four staves. The first staff is a bass clef with a key signature of two flats and a 2/4 time signature. The second and third staves contain melodic lines with first and second endings marked 'I.' and 'II.'. The fourth staff is a bass clef with a key signature of one sharp and a 2/4 time signature. The notation includes various note values, rests, and dynamic markings like '+' and '>'.

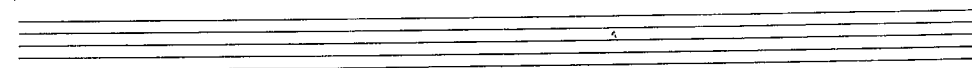
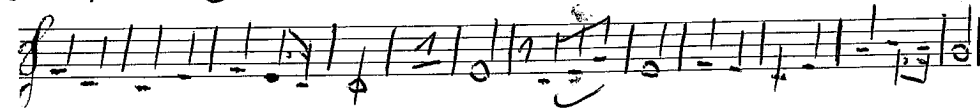
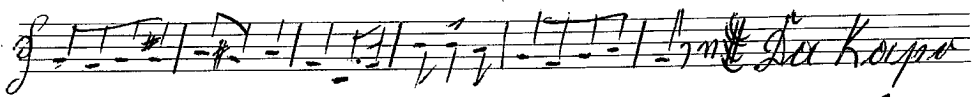
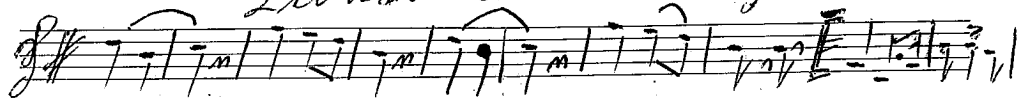
W.D. Cas

Liebestraum Walzer Flügelhorn F. B.

Handwritten musical score for Liebestraum Walzer, Flügelhorn part by F. B. The score consists of 12 staves of music. The first staff is in 3/4 time with a treble clef and a key signature of one sharp (F#). The music is written in a waltz style with many eighth and sixteenth notes. There are several first and second endings marked with 'I' and 'II'. A section of the score is marked 'Trio' and 'Der Kampf' with a key signature change to two sharps (F# and C#) and a time signature change to 3/4. The final staff ends with the text 'Der Kampf'.

Liebestraum Walzer Flughorn I B

Libuse Polkec Flügelhorn # B



Liederkreis von Mathias Geißlinger I B.

Handwritten musical score for 'Liederkreis von Mathias Geißlinger I B.' The score consists of 12 staves of music. The first staff begins with a treble clef, a key signature of one flat (B-flat), and a 3/4 time signature. The music is written in a single melodic line. The lyrics 'Der Körper' are written in cursive below the fourth staff. The lyrics 'Der Körper Kellermann Ludwig' are written in cursive below the twelfth staff. The score includes various musical notations such as notes, rests, beams, and dynamic markings like 'f' and 'ff'. There are also some handwritten annotations above the staves, possibly indicating fingerings or phrasing.

Libuse Polka Bassflügelhorn I B

„Star“ Nr. 13, Schulheft, 6 Systeme

GOETHE M
31

15

M (FRG)
16

Libuse Polka Clarinetto B.

1
2m Doe Keupa

„Star“ Nr. 13, Schulheft, 6 Systeme

Libuse Polka Clarinetto Es.

2m Doe Keupa

„Star“ Nr. 13, Schulheft, 6 Systeme

Libuse Polka Bessa B.

Handwritten musical score for 'Libuse Polka Bessa B.' consisting of six systems of staves. The first system is in G major (one sharp) and 2/4 time. The second system ends with a double bar line and the initials 'D.K.'. The third system is in B-flat major (two flats) and 2/4 time. The fourth system is in B-flat major and 2/4 time. The fifth system is in B-flat major and 2/4 time. The sixth system is in B-flat major and 2/4 time. The score includes various musical notations such as notes, rests, and bar lines.

„Star“ Nr. 13, Schulheft, 6 Systeme.

℘