

M-FRG-176

Kurzbeschreibung der Musikantenhandschrift

1. Orientierungsdaten					
Schreiber	Anton Eder				
Ort / Zeit der Niederschrift	Althütte / 26.08.20 (Seite 45)				
Fundort	Althütte				
2. Äußere Beschreibung					
Umschlagaufschrift Kennzeichnung der ersten Seite:	Keine (Kein Umschlag)				
Format Maße:	Quer 19 x 14,2				
Umfang:	54 Seiten				
Zustand ergänzende Angaben:	gut				
3. Inhaltsübersicht					
	Tänze im ¾ Takt		Tänze im 2/4 und 4/4 Takt		Sonstige Gattungen
x	Ländler	x	Polka (langsam)		Marsch
	Walzer (1-teilig)		Polka (schnell)		Quadrille
x	Walzer (mehrteilig)		Böhmische Polka		Figurentanz
	Halbwalzer		Schottisch		Zweifacher
	Mazurka		Rheinländer	x	Schlager
	(Deutscher) Dreher		Dreher	x	Lied
	Polonaise	x	Galopp		Arie Jodler
	Unbezeichnet		Unbezeichnet		Unbezeichnet
	Sonstiges		Sonstiges		Sonstiges
4. Notiert für					
Instrument:		Piston in B / und Es-Trompete (teilweise auf gegenüberliegenden Seiten geschrieben)			
Komponisten – Angaben:		keine			
5. Entstehung und Tradierung					
Schreibervermerke:		Seite 45: Anton Eder, 20.08.(19)20			
Tradierung:		Blaskapelle Althütte			
Letzter Gebrauch:		1960er Jahre			
Letzter Besitzer:		Willi Eder, Althütte			
Datum und Umstände des Erhalts:		Kauf durch Karl-Heinz Reimeier, ca 1990			
Sonstiges:		Münchner Polka = Polka (langsam)			

16.05.2014



Datum

Unterschrift

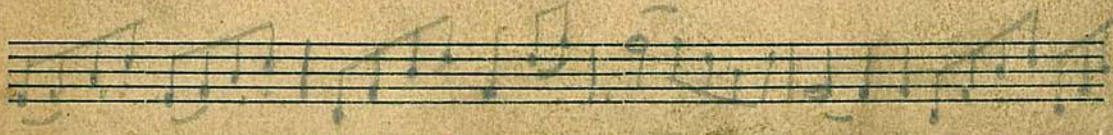
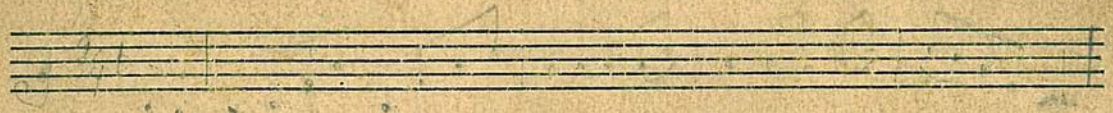
Die Urheberrechte liegen entweder beim Eigentümer der Originale oder der Erstkopien.

Vor Veröffentlichung oder öffentlicher Aufführung ist Rücksprache mit der Archivverwaltung des Heimatkundlichen Arbeitskreises erforderlich.

Lauder

+

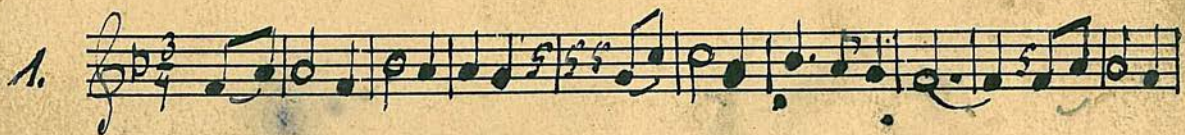
Scottish



Piston in B.



Tromba in E



Pisten in B.

X

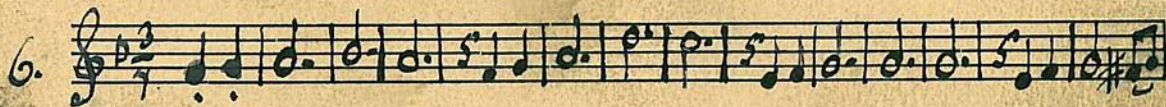
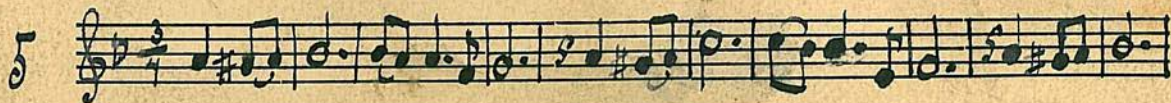
4.

5.

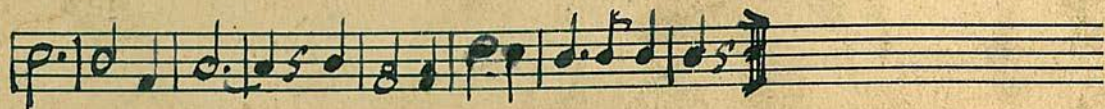
6.

4

Tromba in E♭

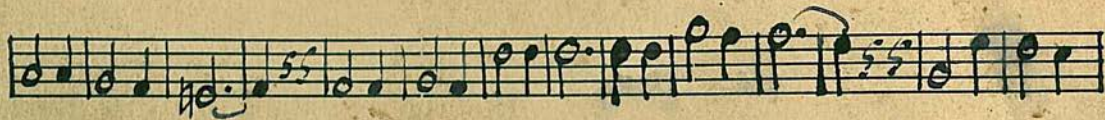
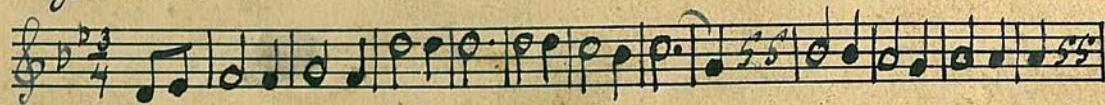


Piston in B

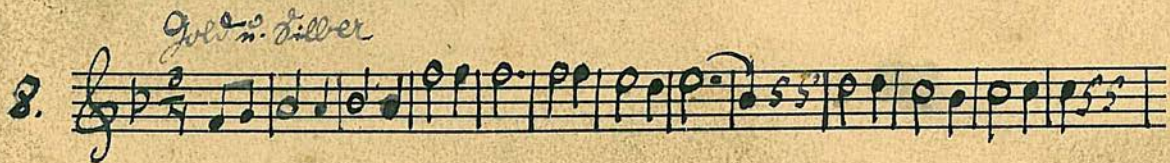
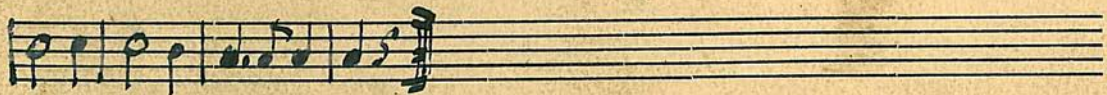


Geld n. Tillend

8.



Tromba in Es



Piston in B



X 10.



Po 11.



8



Trombain 

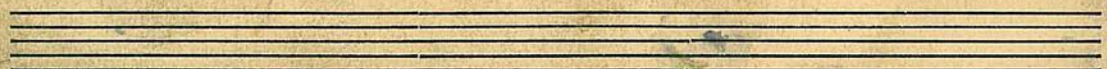
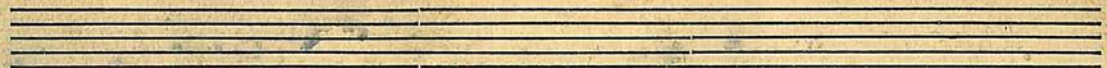
9. 

10. 

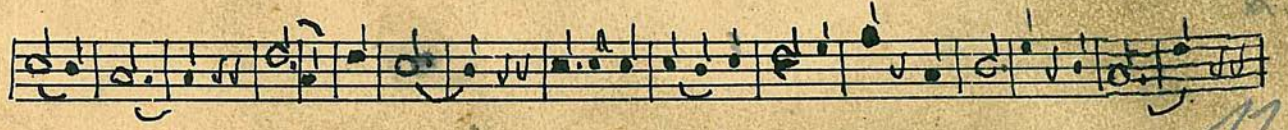
11. 

Piston in B^b

12.



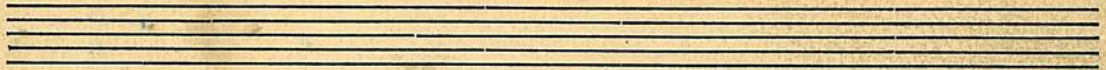
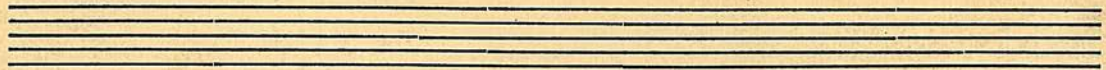
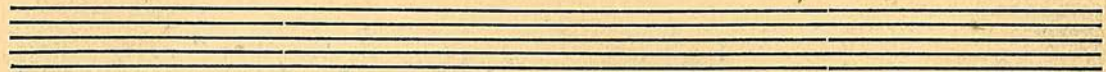
Trambla in E♭



Piston

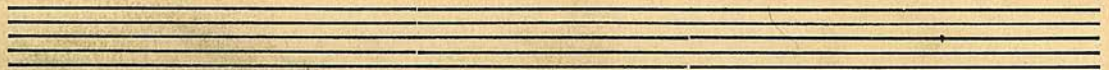
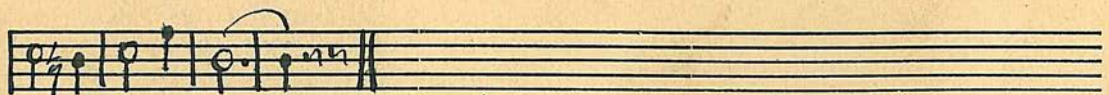
Schwalben-Walzer.

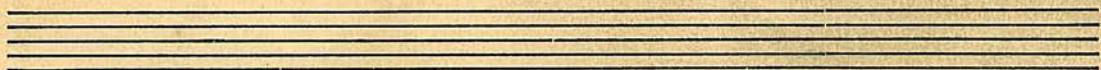
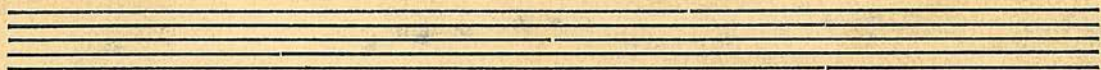
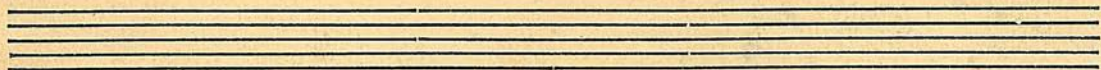
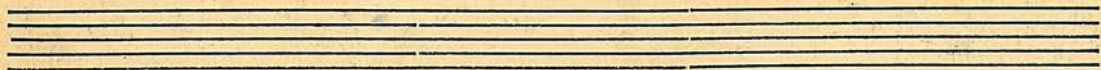
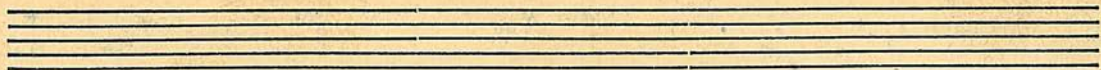




B

Deutscher-Rhein-Walzer





Ländler in A₂.

Pistone in B₂.



Ländler in As.

Tromba II in Es

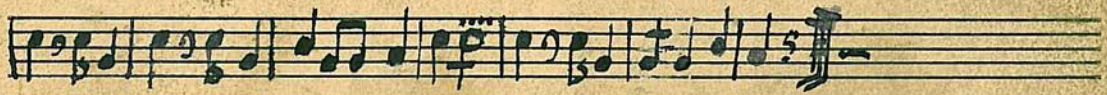


M

Listan in D.



Tromba in Es



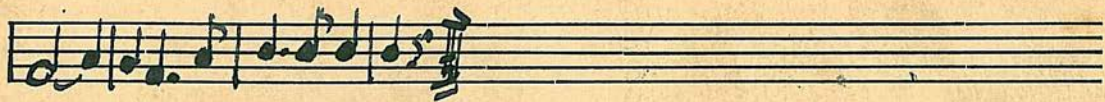
Piston in 3.



Trombin E

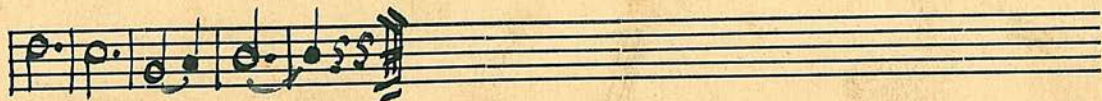


Piston in c^3 .

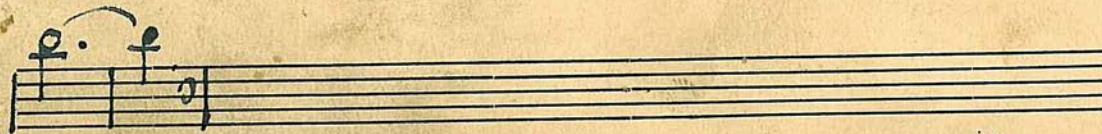


Clavier in D.

16. 



17. 



Liston in B

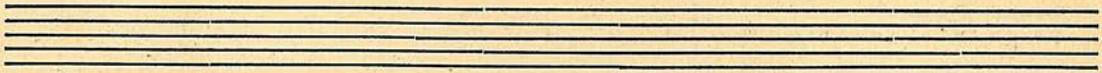
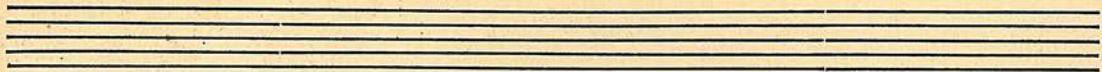
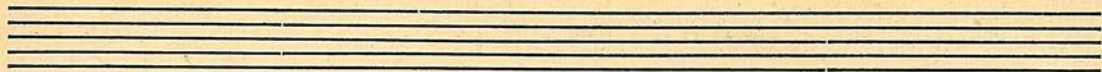


Tromba in E



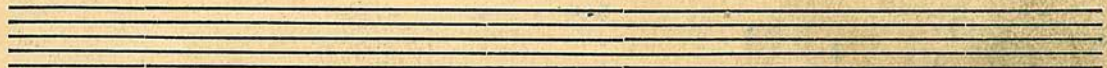
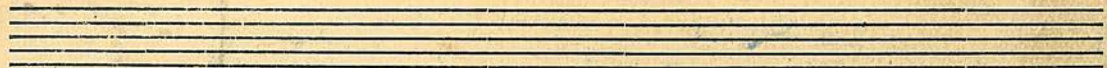
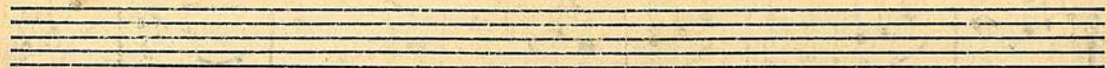
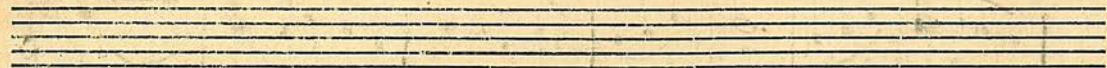
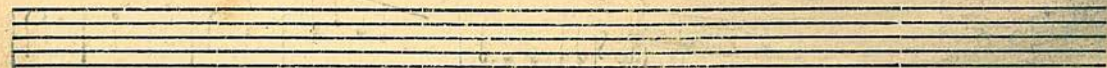
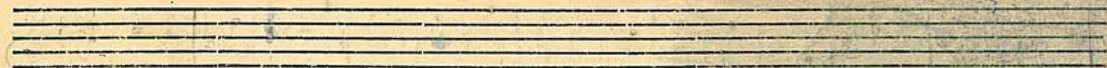
Londawellen-Walzer

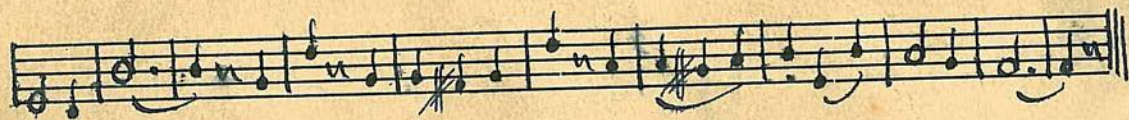
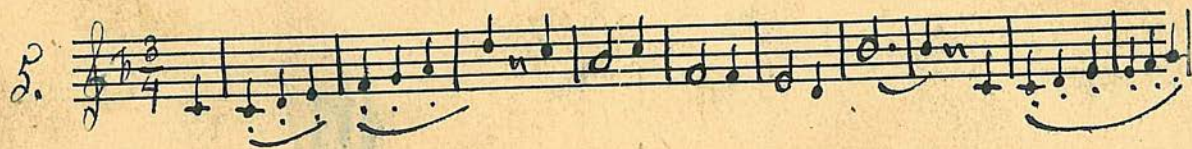
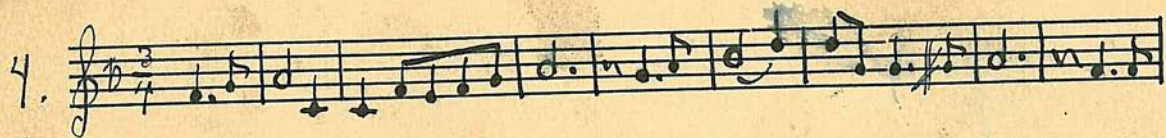




Ländler in Es

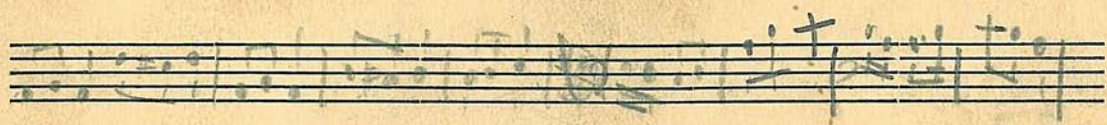






34





6

Handwritten musical notation for exercise 6, first staff. It begins with a treble clef, a 3/4 time signature, and a key signature of one flat (B-flat). The melody consists of quarter and eighth notes, ending with a fermata on a whole note.

Handwritten musical notation for exercise 6, second staff. It continues the melody from the first staff, ending with a double bar line and a fermata.

7.

Handwritten musical notation for exercise 7, first staff. It begins with a treble clef, a 3/4 time signature, and a key signature of one flat (B-flat). The melody features dotted rhythms and slurs, ending with a fermata.

Handwritten musical notation for exercise 7, second staff. It continues the melody from the first staff, ending with a double bar line and a fermata.

8

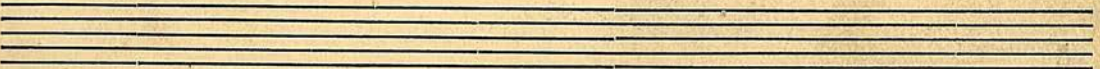
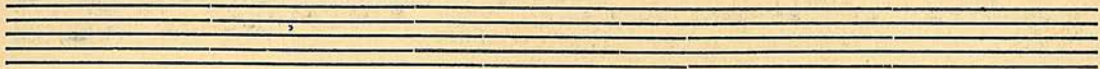
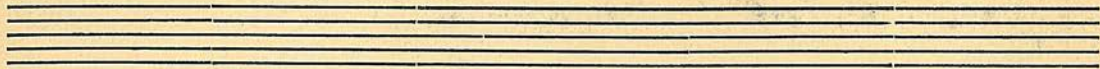
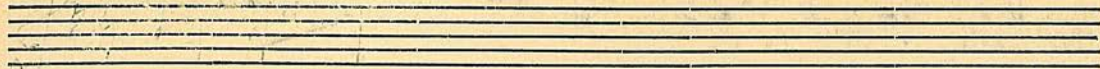
Handwritten musical notation for exercise 8, first staff. It begins with a treble clef, a 3/4 time signature, and a key signature of one flat (B-flat). The melody includes slurs and a "tu" marking above a note, ending with a fermata.

Handwritten musical notation for exercise 8, second staff. It continues the melody from the first staff, ending with a double bar line and a fermata.



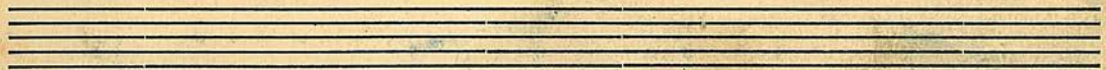
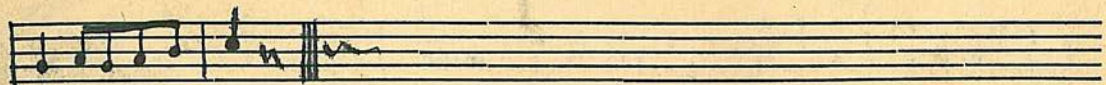
9.





Ländlerin B.





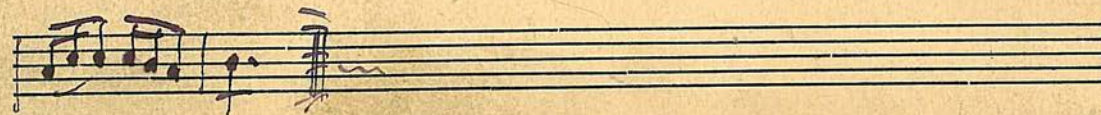
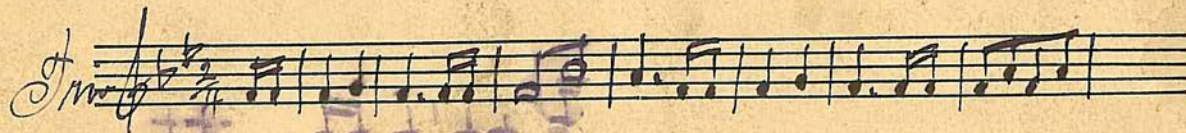
Schwarzwalzmädel



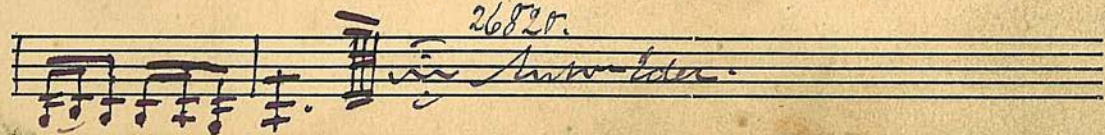
Es



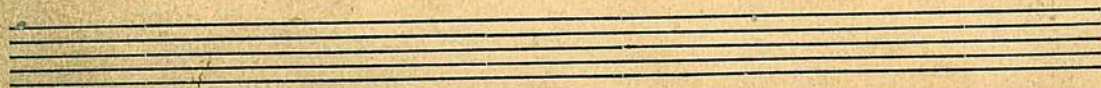
Fristen in G. Adalopp.



in Es. Galopp.



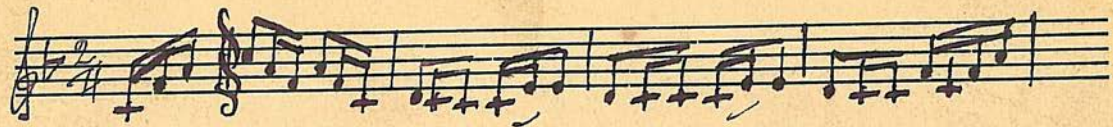
Fis-ton in G. Kupferschmied Schottisch.



in Es. *Küpferschnitt*.

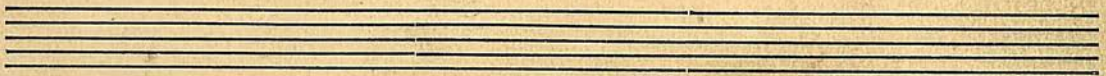


Fiskon i G. Münchner Folka.



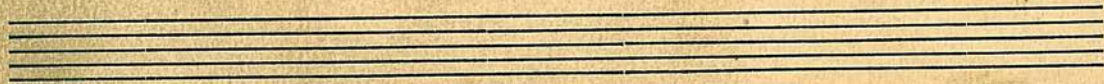
in Es

Münchener Polka



Friston in G.

Münchener Polka.



Fr. in Es. Münchner Polka.



Püppchen Piston in G.

A handwritten musical score on aged paper, consisting of six staves of music. The title at the top is 'Püppchen Piston in G.' The first staff begins with a treble clef, a key signature of one sharp (F#), and a 4/4 time signature. The music is written in a single melodic line with various note values, rests, and slurs. The notation is somewhat informal, with some ink bleed-through visible from the reverse side of the page. The sixth staff concludes with a double bar line and repeat dots.

In E.

ppp
poco



Schöneberg. Firston in G.

Handwritten musical score for 'Schöneberg. Firston in G.' The score is written on five staves. The first staff is in treble clef with a 7/8 time signature. The second staff is in bass clef. The third staff is in treble clef. The fourth and fifth staves are in bass clef. The music features various rhythmic patterns, including eighth and sixteenth notes, and rests. There are several plus signs (+) written below the notes in the first three staves. The word 'Für' is written in cursive above the first staff, and 'Es Für' is written above the second staff. A 'p' (piano) dynamic marking is visible below the second staff. The score concludes with a double bar line and repeat signs at the end of the fifth staff.

