

I. Orientierungsdaten

Schreiber Erich Schüssl
Fundort 8393 Heinrichsbrunn
Zeit der Niederschrift 1934

Ort der Aufzeichnung Gegend Mauth (?)

II. Äußerliche Merkmale

Umschlagaufschrift/Kennzeichnung der ersten Seite

"Bashorn in B"

mittelblauer, eingerissener, lose aufliegender Karton.

Maße 25,5 cm x 16,5 cm

Umfang 10 Seiten

Weitere Beschreibung

hellbraunes, fleckiges Papier;
unpaginierte, lose Blätter;
Noten mit schwarzer Tinte auf schwarzen Notenzeilen.

III. Inhaltsübersicht

Ländler	Walzer
Mazurka	Deutscher Dreher
Galopp	Schottisch
Polka s 10	Zwiefache
Figurentänze	andere Tänze
Marsch	Vortragsstück
Lied	

Notiert für Baßflügelhorn in B

Quellenvermerke keine

IV. Weitere Angaben

Besitzer Ludwig Kellermann, Heinrichsbrunn, 8393 Mauth

Vermerke S. 1,2: "Schüssl Erich, 27.12.1934"

S. 3,5,6,7,8,9: Datumsangaben

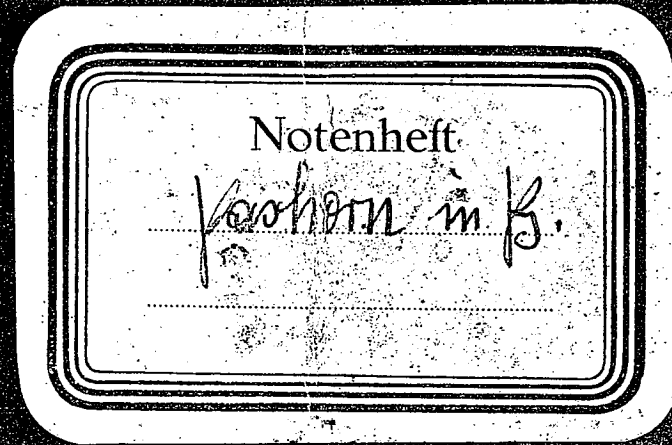
S. 4,10: "Geschrieben von Schüssl Erich am 27. Dezember 1934" u.ä.

Letzter Gebrauch ?

Datum und Umstände des Erhalts

Am 10.11.85 von Herrn Kellermann zur Durchsicht und zur Kopie erhalten.

6



M (FRG)
5 g

M (E) M

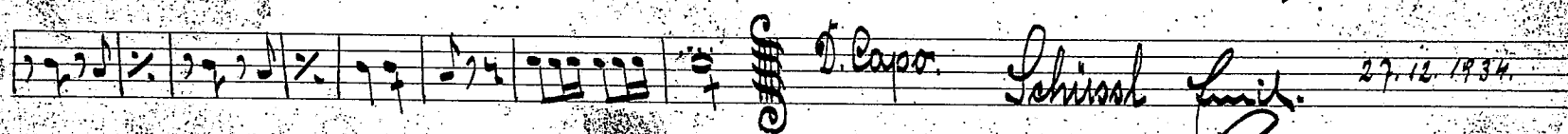
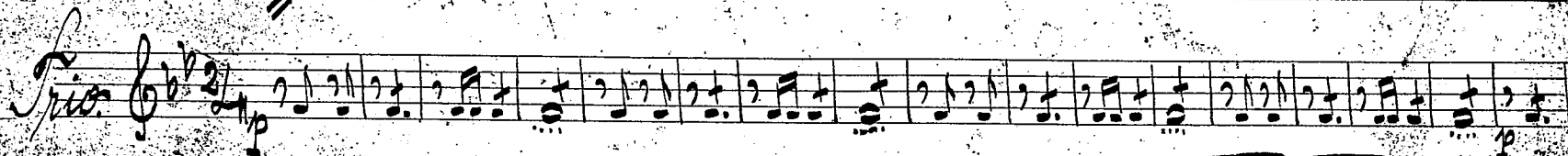
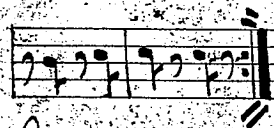
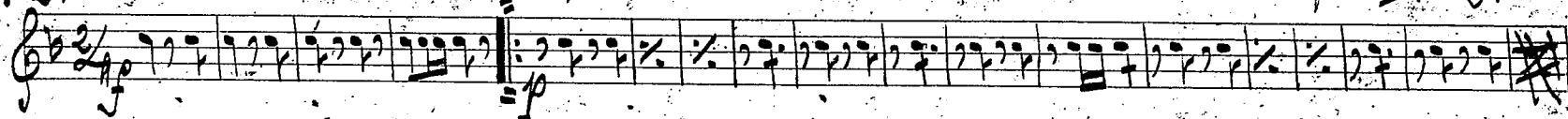
82

1

№ 2.

Polka.

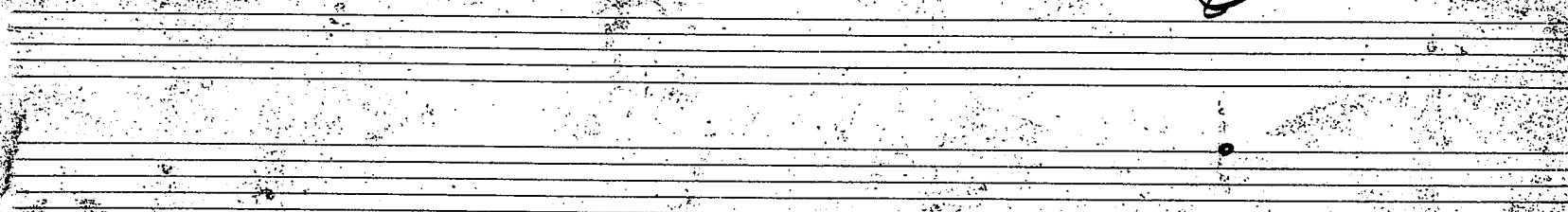
Bachofh. II. B.



D. Casp.

Schissel Luit.

27.12.1934



1

M (FRG)

59

Polka.

I. B.

No. 5.

Handwritten musical notation for the first system, consisting of two staves. The top staff is in treble clef and the bottom staff is in bass clef. The music features a mix of eighth and sixteenth notes, with some rests and a double bar line indicating the end of a phrase.

Trio.

Handwritten musical notation for the second system, consisting of two staves. The top staff is in treble clef and the bottom staff is in bass clef. The music continues with similar rhythmic patterns and includes a double bar line.

Handwritten musical notation for the third system, consisting of two staves. The top staff is in treble clef and the bottom staff is in bass clef. The music concludes with a double bar line and a final flourish.

Lehinsk' Lujk.

27.12.1964

2

(OFF) M

B C

No. 10

Polkas.

Bahofll. I. B.

Trio

No. 12. *Volm.*

Polka.

II. B.

Trio.

Schmal Guit. geschrieben am 27. December 1934.

№ 15.

Polka

Bahsflügelhorn I. H.

Handwritten musical score for Polka, featuring four staves with notes, rests, and dynamic markings like 'p' and 'Cresc.'.

27. 12. 1934.

No. 28.

88 F

Polkoo.

I. B.

Tris.

sum 27. 12. 1934.

No. 61.

Polka.

Bohoffs. II. 18.

Trio.

27.12.1934.

No. 62.

88 2

Polka.

I. 2.

Trio

No. 63.

Polka.

Bahoffl. II. 17

Trio

© 1934 27.12.1934

No. 65.

Polka.

Bachsch. I. B.

Handwritten musical notation for the first section of the piece, consisting of three staves. The first staff is in treble clef with a 2/4 time signature. The second and third staves are in bass clef. The music features a mix of eighth and sixteenth notes with repeat signs.

Trio

Handwritten musical notation for the Trio section, consisting of two staves. The first staff is in treble clef with a 2/4 time signature. The second staff is in bass clef. The music continues with eighth and sixteenth notes and includes a "D. Capo." marking.

Geschrieben von Schissel Luit am 27. Dezember 1904.

(BPP) M