

Beschreibung der Musikantenhandschrift .M.(M.M.) 5h

I. Orientierungsdaten

Schreiber Franz Gruber  
Fundort 8393 Heinrichsbrunn Ort der Aufzeichnung Gebiet Mauth (?)  
Zeit der Niederschrift 1934

II. Äußerliche Merkmale

Umschlagaufschrift/Kennzeichnung der ersten Seite

"Basso"

mittelblauer, lose aufliegender, mehrfach geknickter, dünner Karton.

Maße 25,5 cm x 16,5 cm

Umfang 10 Seiten

Weitere Beschreibung

braune, fleckige, lose, eingerisene und teilweise geknickte Blätter;  
Noten mit schwarzer Tinte auf schwarzen Notenzeilen;  
Brandfleck auf S.9/10

III. Inhaltsübersicht

Ländler	Walzer
Mazurka	Deutscher Dreher
Galopp	Schottisch
Polka s. 10	Zwiefache
Figurentänze	andere Tänze
Marsch	Vortragsstück
Lied	

Notiert für Baß

Quellenvermerke keine

IV. Weitere Angaben

Besitzer Ludwig Kellermann, Heinrichsbrunn, 8393 Mauth

Vermerke

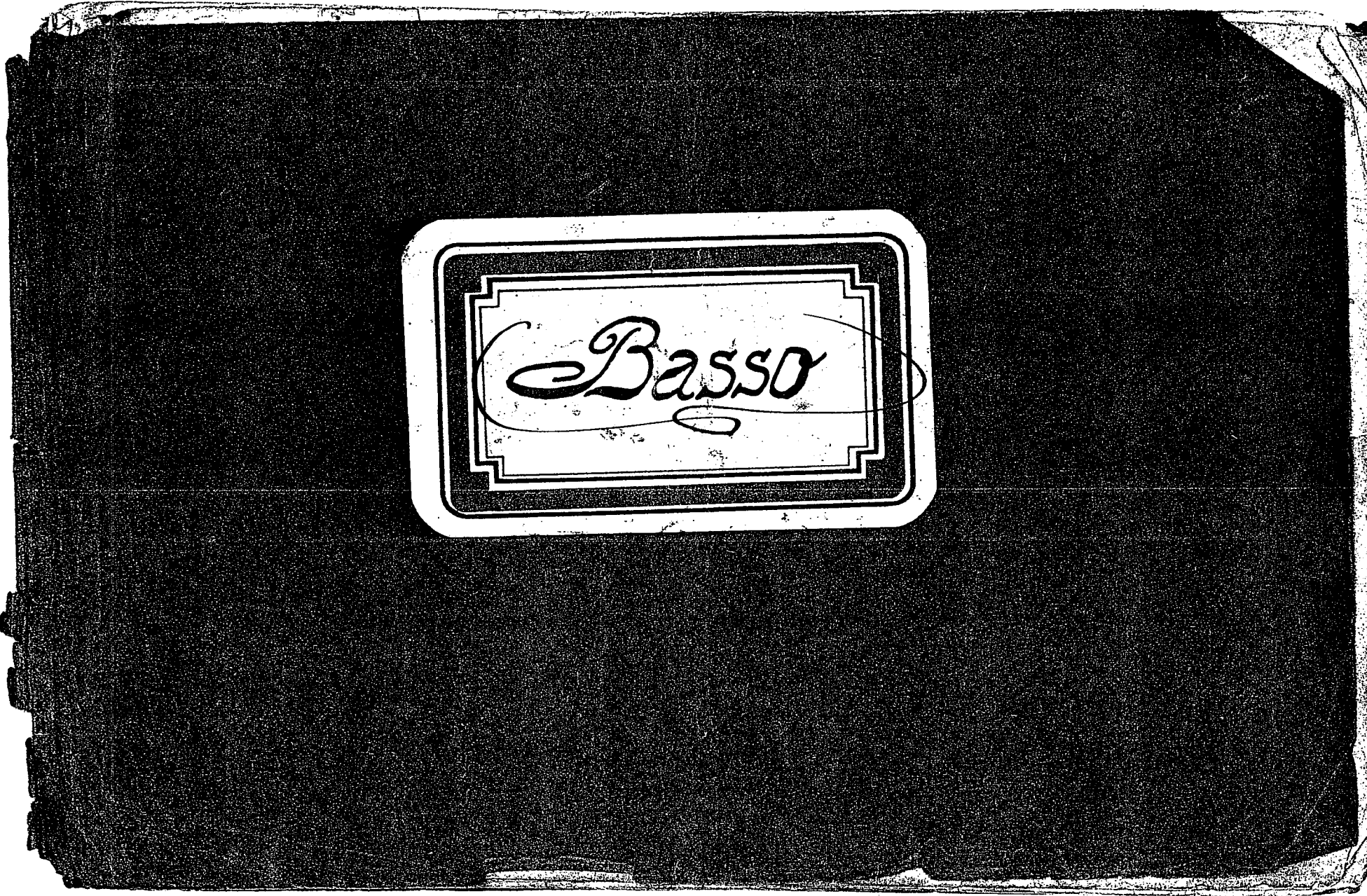
S. 2,5,6: "Gruber Franz, geschrieben am 28.12.1934" o.ä.

Letzter Gebrauch ?

Datum und Umstände des Erhalts

Am 10.11.85 von Herrn Kellermann zur Durchsicht und zum Kopieren geholt.

6



*Basso*

M (FRG)  
5 n

MEMORANDUM

10

1

# Polka Bass

The image shows a handwritten musical score for a piece titled "Polka Bass". The score is written on two systems of staves. The first system consists of three staves, and the second system consists of three staves. The music is written in a 2/4 time signature with a key signature of two flats (B-flat and E-flat). The first staff of the first system begins with a dynamic marking of *f* (forte). The second staff of the first system has a dynamic marking of *f* and a *rit.* (ritardando) marking. The third staff of the first system has a *rit.* marking. The second system begins with a dynamic marking of *f* and a *rit.* marking. The music is written in a style that is characteristic of early 20th-century manuscript notation, with some ink bleed-through and wear on the paper.

M (FRG)

5 h

1

Tuba Bassi

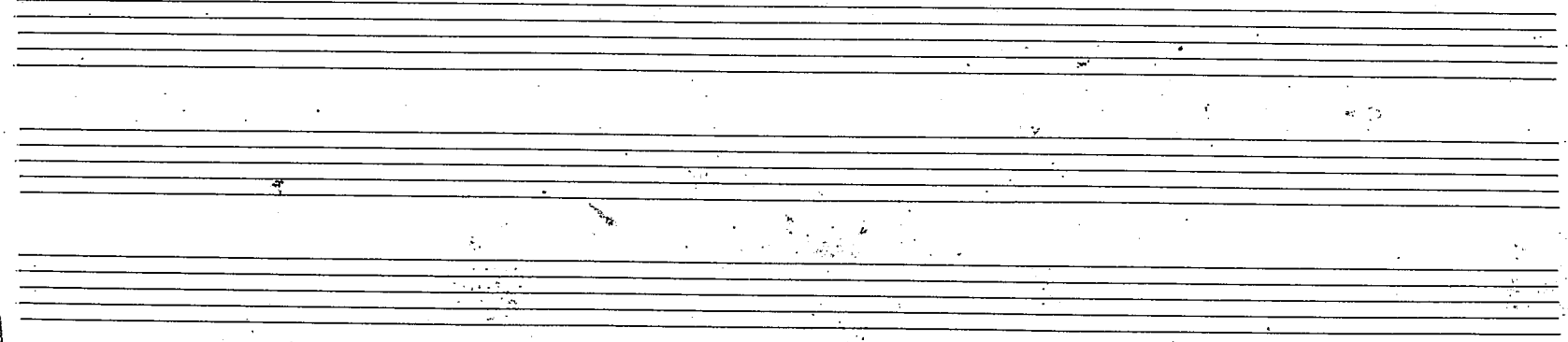
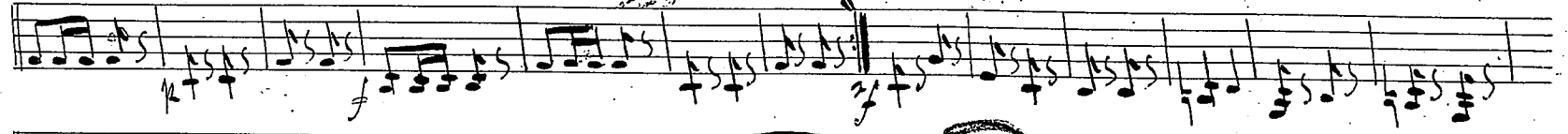
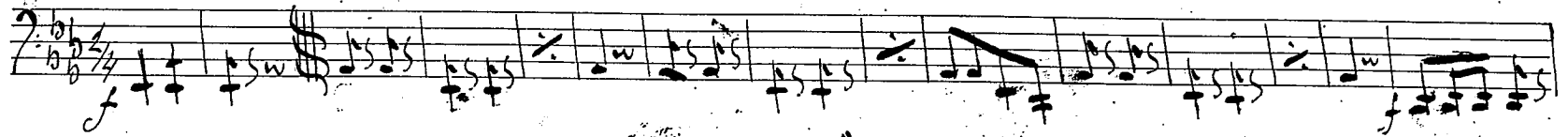
Handwritten musical score for Tuba Bassi, consisting of five staves. The first staff is in bass clef with a key signature of one flat and a common time signature. The second staff is in treble clef with a key signature of one flat. The third staff is in bass clef with a key signature of one flat and a 2/4 time signature. The fourth and fifth staves are in treble clef with a key signature of one flat. The score includes various musical notations such as notes, rests, slurs, and dynamic markings like 'f' and 'p'. There are also some handwritten annotations and a double bar line with repeat dots.

Trio

Quäber Franz geschrieben am 29. 12. 1934

Andante

Polka Romi



201/12

# Polka Gouni

A handwritten musical score for a piece titled "Polka Gouni". The score is written on six staves. The first staff begins with a treble clef, a key signature of one flat (B-flat), and a 2/4 time signature. The music consists of a series of rhythmic patterns, primarily eighth and sixteenth notes, with some rests and dynamic markings such as *p* and *f*. The second staff continues the melody. The third staff features a change in key signature to two flats (B-flat and E-flat) and a 2/4 time signature, with the word "Fin" written above the staff. The fourth and fifth staves continue the piece with various rhythmic figures and dynamic markings. The sixth staff concludes the piece with a double bar line and the word "F. Gouni" written at the end. Below the sixth staff are three empty staves.

4

(GFF) M

n 2

Günther Franz geschrieben am 28/12. 1934.

M (FRG)

5 h



# Polka Bassi

Handwritten musical score for Polka Bassi, consisting of five staves of music. The notation includes various notes, rests, and dynamic markings such as 'f'. The score is written in a style typical of early 20th-century manuscript notation.

Capo Trio

Capo

Günther Franz geschrieben am 28. 12. 34

6

M (FRG) 12

Polka Kawi

2

*Polka Zani*

Handwritten musical score for 'Polka Zani'. The score is written on six staves. The first staff is in treble clef with a key signature of two flats (B-flat and E-flat) and a 2/4 time signature. It begins with a dynamic marking of *f* and contains a series of eighth and sixteenth notes. The second staff continues the melody with similar rhythmic patterns. The third staff features a *rit.* marking and ends with a double bar line and the word *Fine*. The fourth staff is in bass clef with the same key signature and time signature, providing a bass line. The fifth staff continues the bass line. The sixth staff begins with a dynamic marking of *f* and contains a few notes before ending with a double bar line. The manuscript shows signs of age, including ink bleed-through and some staining.

(MFR) M  
12

Polka Ferni

Handwritten musical score for 'Polka Ferni'. The score consists of seven staves. The first staff begins with a treble clef, a key signature of two flats (B-flat and E-flat), and a dynamic marking of *f*. The second staff starts with a piano (*p*) dynamic. The third staff concludes with a *Fine* marking. The fourth staff begins with a key signature change to one flat (B-flat) and a dynamic marking of *p*. The fifth staff features a *f* dynamic. The sixth staff includes a *fz* dynamic marking. The seventh staff ends with a *Capo* instruction. The notation includes various rhythmic values, accidentals, and articulation marks.

*Polka Jenu*

