

I. Orientierungsdaten

Schreiber Franz Blöchinger (?)

Fundort 8393 Heinrichsbrunn

Ort der Aufzeichnung Gebiet Mauth

Zeit der Niederschrift um 1935 (?)

II. Äußerliche Merkmale

Umschlagaufschrift/Kennzeichnung der ersten Seite

"Franz Blöchinger Klarinette in B"

mittelblauer Pappkarton, in der Mitte geknickt

Maße 26,5 cm x 16,5 cm

Umfang 6 Seiten

Weitere Beschreibung

helles Papier; lose, geknickte, unpaginierte Blätter;

Fragment, letztes Blatt abgeschnitten;

Noten mit schwarzer Tinte auf schwarzen Notenzeilen.

III. Inhaltsübersicht

Ländler

Walzer X

Mazurka

Deutscher Dreher

Galopp

Schottisch

Polka X

Zwiefache

Figurentänze

andere Tänze

Marsch X

Vortragsstück

Lied

Notiert für Klarinette in B

Quellenvermerke keine

IV. Weitere Angaben

Besitzer Ludwig Kellermann, Heinrichsbrunn, 8393 Mauth

Vermerke keine

Letzter Gebrauch ?

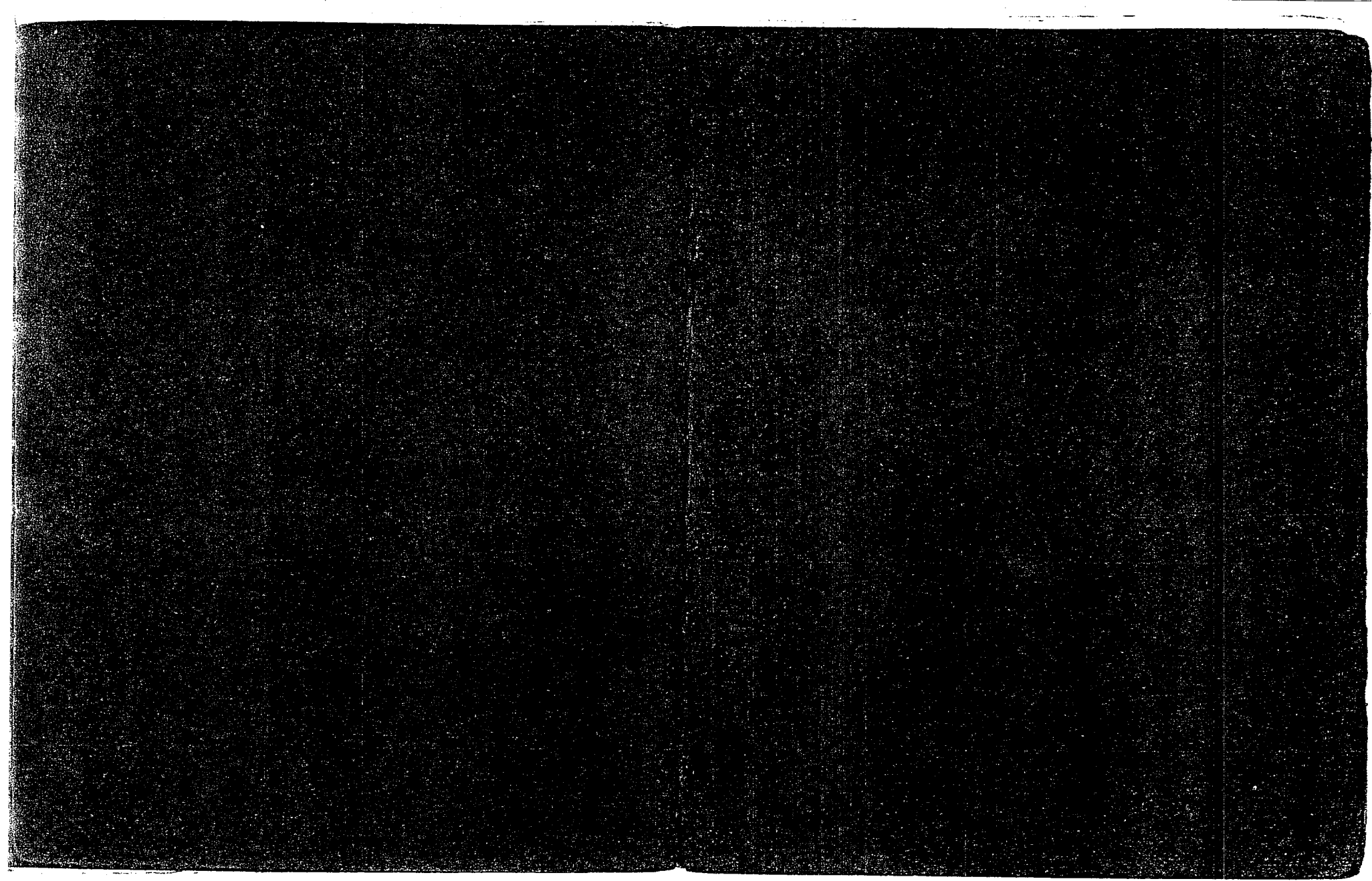
Datum und Umstände des Erhalts

S. M 6a

4

Franz Döhlinger
Klarinette in B.
»Sünova« Notenheft.

M (FRG)
60



1977

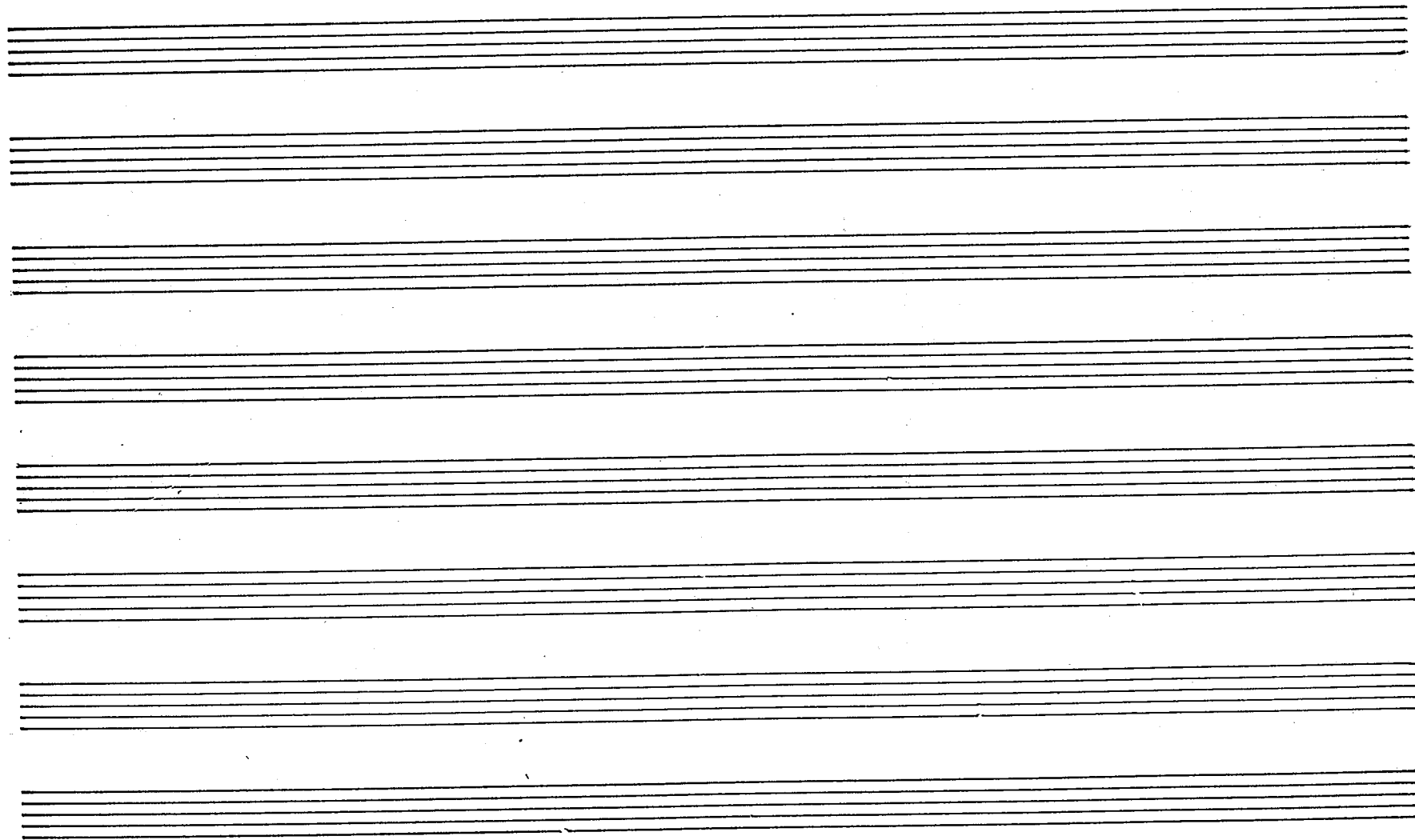
3

flieger Marsch

Klarinete in B.

•Sünova• Nr. 48 - 8 zeilig*

M (FRG)



2

© 1914 M

2

No. 7 Polka

Handwritten musical notation for 'No. 7 Polka'. It consists of three staves. The first staff is in 2/4 time with a key signature of one flat. The second staff includes the instruction 'Pizz.' and 'f. tempo.' and changes to 3/4 time. The third staff contains a double bar line and the Roman numerals 'I' and 'II'.

No. 14 Wäher

Handwritten musical notation for 'No. 14 Wäher'. It consists of five staves. The first staff is in 3/4 time with a key signature of one flat. The second staff includes the instruction 'Pizz.'. The third staff includes the instruction 'f. tempo.' and changes to 2/4 time. The fourth and fifth staves continue the notation with various musical markings.

»Sünova« Nr. 48 - 8 zeilig*

No. 20 Polka Wäyer

The first system of handwritten musical notation for 'Polka Wäyer'. It consists of two staves. The first staff is in treble clef with a key signature of two flats (B-flat and E-flat) and a 3/4 time signature. The second staff is in bass clef. The music features a mix of eighth and sixteenth notes, with some rests and dynamic markings.

The second system of handwritten musical notation. It consists of two staves. The first staff continues the melody from the first system. The second staff is in bass clef. A tempo marking 'Trio' is written above the second staff. The key signature remains two flats and the time signature is 3/4.

The third system of handwritten musical notation. It consists of two staves. The first staff continues the melody. The second staff is in bass clef. The tempo marking 'Trio' is still present. The key signature remains two flats and the time signature is 3/4.

The fourth system of handwritten musical notation. It consists of two staves. The first staff continues the melody. The second staff is in bass clef. The tempo marking 'Trio' is still present. The key signature remains two flats and the time signature is 3/4. The system ends with a double bar line and a fermata.

Four empty musical staves, each consisting of five horizontal lines, arranged vertically. They are intended for additional musical notation.

3

Nr 15 Sibirsky. Marsch

The image shows a handwritten musical score for a piece titled "Sibirsky. Marsch" (No. 15). The score is written on six staves. The first staff begins with a treble clef and a key signature of one sharp (F#). The music is characterized by a rhythmic pattern of eighth and sixteenth notes, with frequent use of accidentals (sharps and naturals). The second staff continues the melody with similar rhythmic patterns. The third staff features a change in key signature to one flat (Bb) and includes a double bar line with the word "Trio" written above it. The fourth and fifth staves continue the melody in the new key signature. The sixth staff concludes the piece with a double bar line and the word "Fine" written below it. Below the sixth staff, there are three empty staves.

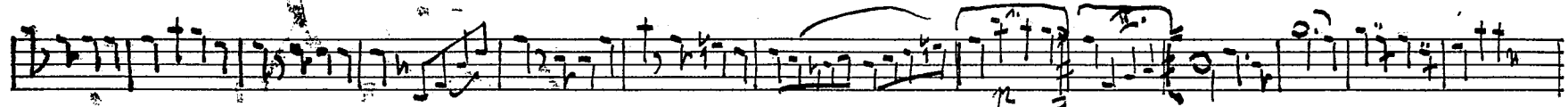
»Sünova« Nr. 48 - 8 zeilig*

M (FRG)

6.

5

No. 13 marsch



Triu

